

SQUARE IN SQUARE

PAISLEY QUILT



Quilt size: 84" x 84"



*Fabrics by
Kathy Hall with
Jo Morton for the*
**International Quilt
Study Center**

Under License to Andover Fabrics from The International
Quilt Study Center, University of Nebraska - Lincoln



makower uk[®]

1384 Broadway
New York, NY 10018
(800) 223-5678
www.andoverfabrics.com

5/31/12

SQUARE IN SQUARE

PAISLEY QUILT

*Fabrics by Kathy Hall with Jo Morton for the
International Quilt Study Center*

Under License to Andover Fabrics from The International
Quilt Study Center, University of Nebraska - Lincoln



1384 Broadway
New York, NY 10018
(800) 223-5678

makower uk® www.andoverfabrics.com

Bolts needed to cut project kits				
Red	Black	10 kits	20 kits	30 kits
5885-R	5885-K	4	7	10
5887-R	5887-KR	1	2	2
5888-RG	5888-K	1	2	3
5889-RB	5891-KR	2	3	4
5890-RY	5890-KL	1	1	2
5892-R	5892-K	2	3	4
5891-RB	5891-K	1	1	2
Backing Fabric				
5886-RY	5886-K	5	10	15
*Yardage needed for backing (7½ yards per kit)				

*Fabrics shown are 25% of actual size.
All fabrics are used in featured quilt pattern.*



5885-R 4 yds



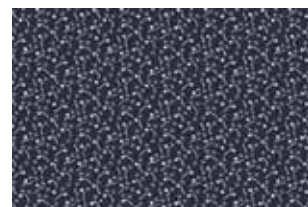
5886-RY 7½ yds (backing)



5887-R ⅞ yd



5888-RG 1⅜ yds



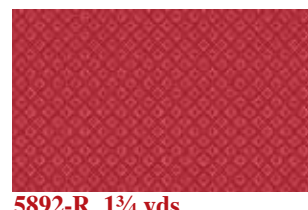
5889-RB 1⅝ yds



5890-RY ¾ yd



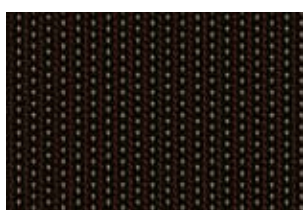
5891-RB ⅝ yd



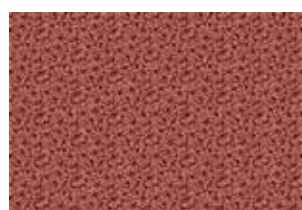
5892-R 1¼ yds
(includes binding)



5885-K



5886-K



5887-KR



5888-K



5889-K



5889-KR



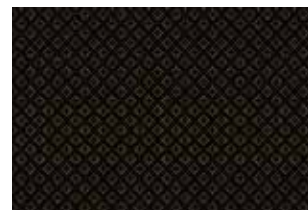
5890-KL



5891-K



5891-KR



5892-K